

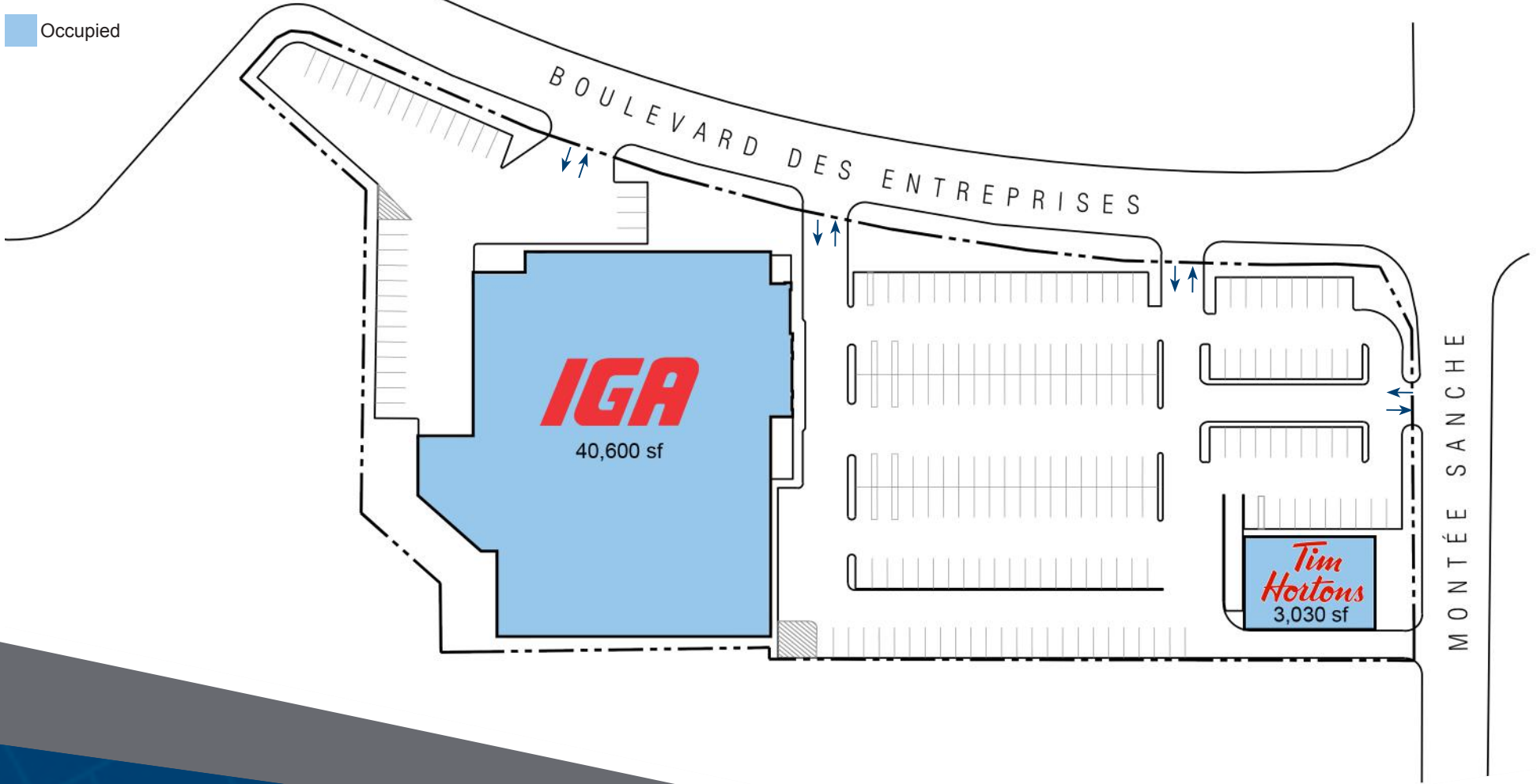
# 25 Boulevard Des Entreprises & 355 Montée Sanche Boisbriand, QC



For leasing inquiries please contact  
Skyline at 416-444-5229

Legend

Occupied



For leasing inquiries please contact  
Skyline at 416-444-5229

# 25 Boulevard Des Entreprises & 355 Montée Sanche Boisbriand, QC

This space is comprised of 43,630 square feet of gross leasing area. It is close to other retail locations and is easily accessible from Boulevard des Entreprises. The parking lot supports 215 dedicated spaces for the buildings. This location is currently occupied by IGA and Tim Hortons.

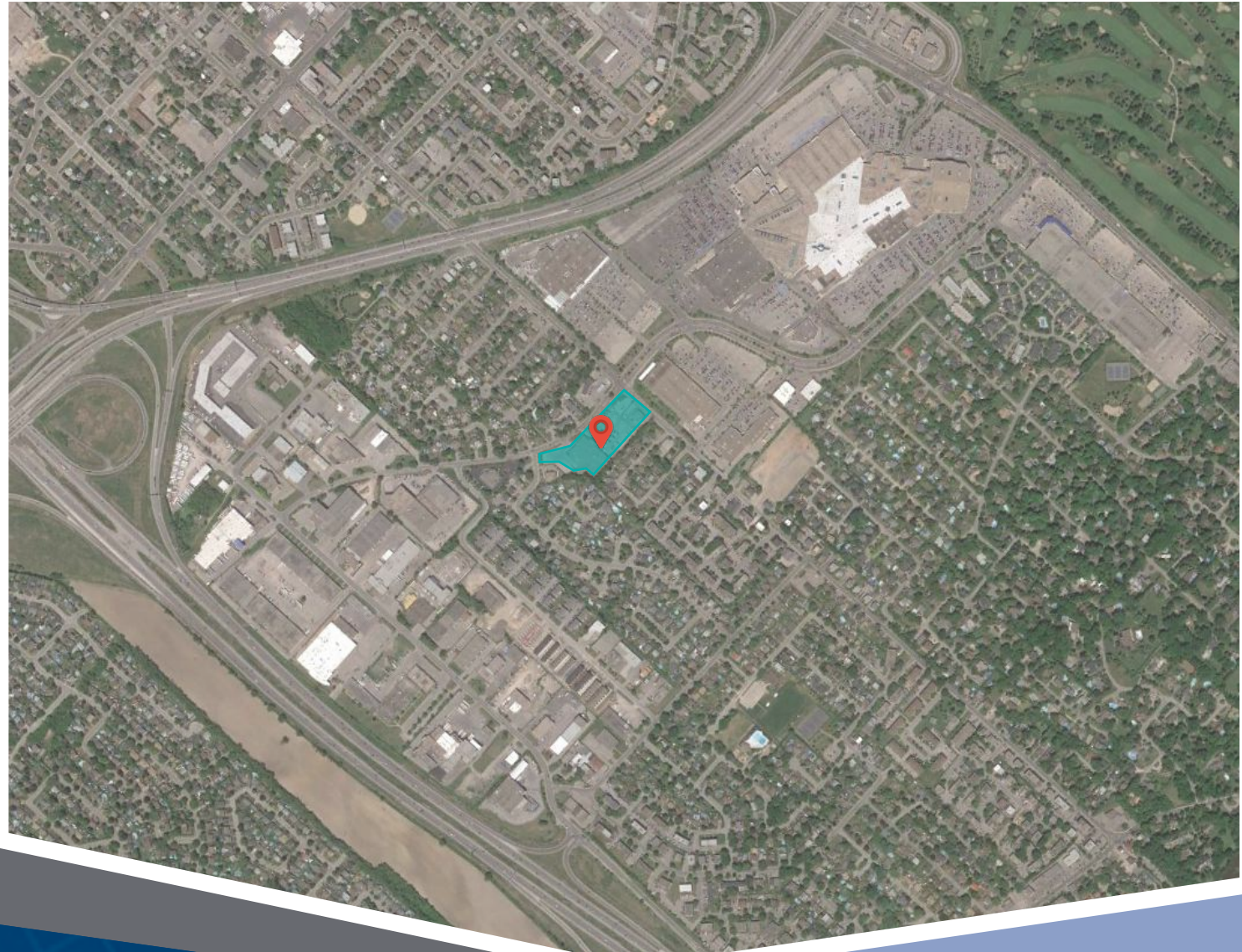
**Closest Major Intersection:**

Montée Sanche & Boulevard  
Bouthillier

**GLA:** 43,630 sf

**HIGHLIGHTS**

- Professionally managed retail property
- Front signage opportunity facing busy Boulevard des Entreprises
- Ample customer parking in dedicated lot



For leasing inquiries please contact  
**Skyline at 416-444-5229**