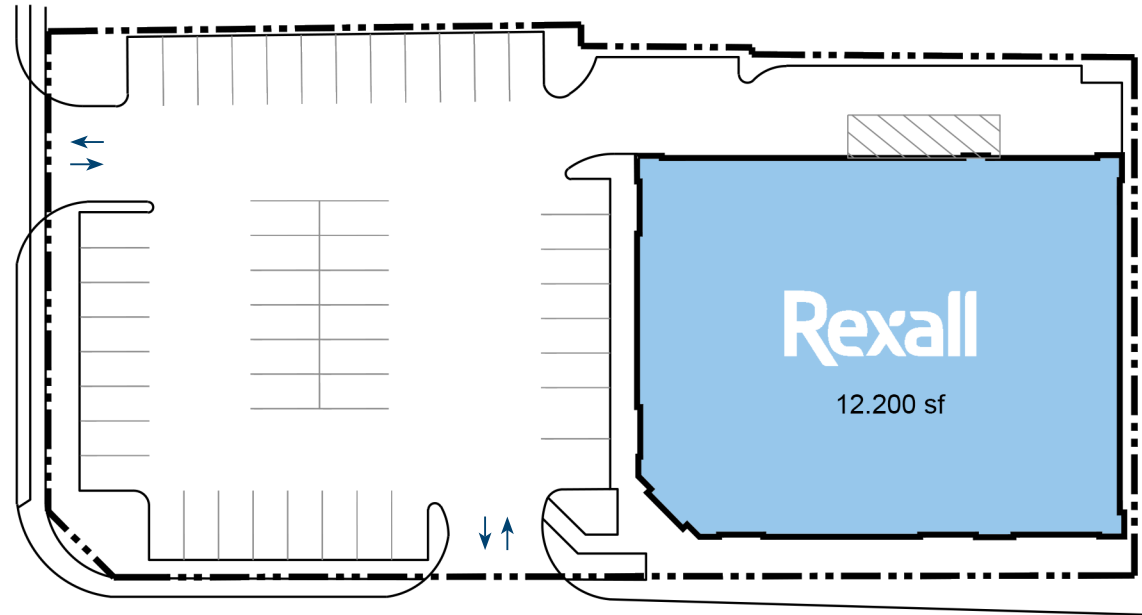


For leasing inquiries please contact
Skyline at 416-444-5229

Legend

Occupied

M C N A U G H T O N
A V E N U E
E



S T C L A I R S T R E E T



For leasing inquiries please contact
Skyline at 416-444-5229

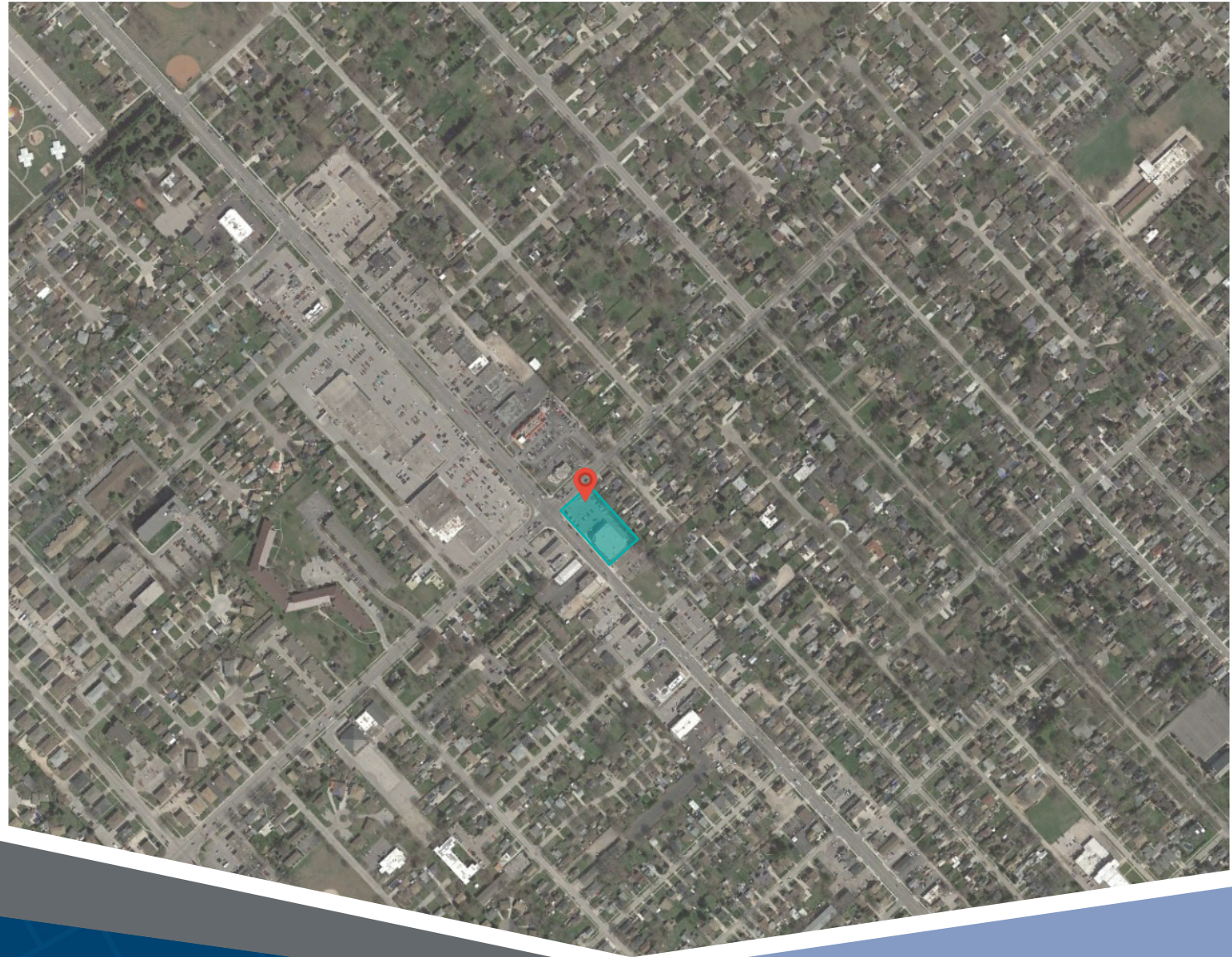
401 St. Clair Street is a retail building located in Chatham, and is in close proximity to a mix of commercial/retail businesses, restaurants, cafés, and shops. This space is comprised of 12,200 square feet of gross leasing area and the parking lot supports 47 dedicated spaces for the building. This location is currently occupied by Rexall.

Closest Major Intersection:
Highway 2 and Highway 40

GLA: 12,200 sf

HIGHLIGHTS

- Professionally managed property
- Ample surface parking for staff and customers
- Good flow of customer traffic
- Gas station located across the road
- Exterior and pylon signage opportunities



For leasing inquiries please contact
Skyline at 416-444-5229