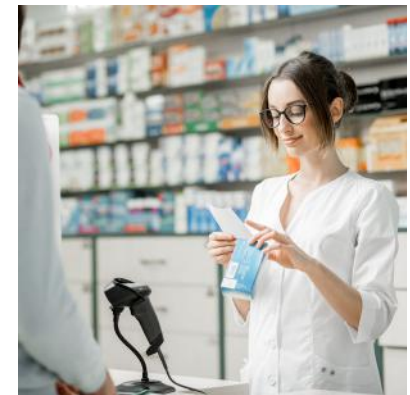


# 6455-6461 Christophe-Colomb Avenue Montreal, QC



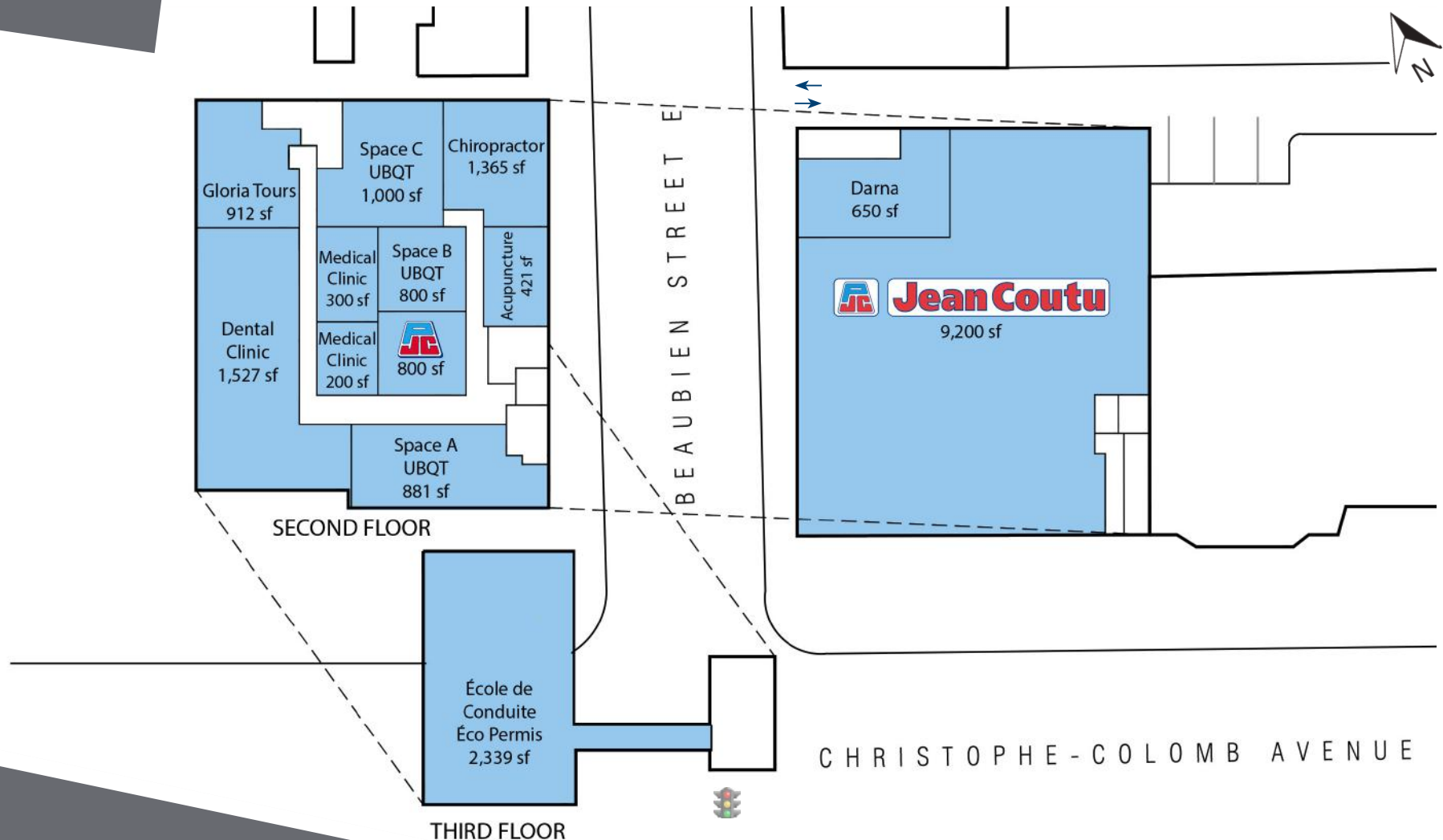
For leasing inquiries please contact  
**Skyline at 1-800-451-5229**  
<https://www.skylineretailreit.ca/>

# 6455-6461 Christophe-Colomb Avenue Montreal, QC

**Legend**

 Available

 Occupied



For leasing inquiries please contact  
**Skyline at 1-800-451-5229**  
<https://www.skylineretailreit.ca/>

# 6455-6461 Christophe-Colomb Avenue Montreal, QC

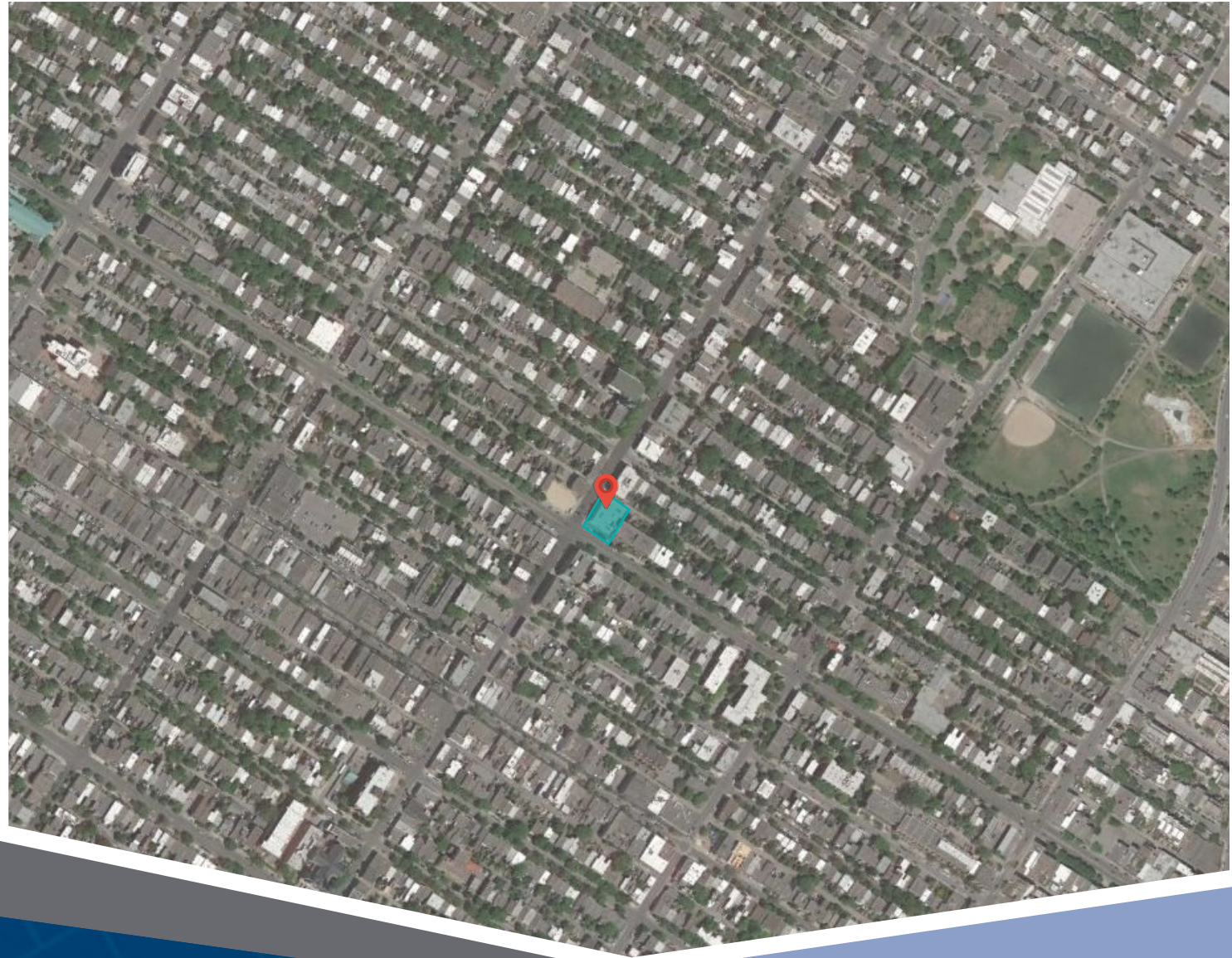
6455 Christophe-Colomb Avenue is a unique retail opportunity in Montreal. Located steps from Beaubien Metro Station, this plaza is surrounded by dense neighbourhoods of multi-storey residential homes and sees a heavy amount of pedestrian traffic. This site is anchored by Jean Coutu, and offers both street level and 2nd story office space opportunities.

**Closest Major Intersection:**  
Christophe-Colomb Ave. & Beaubien St. E.

**GLA:** 20,421 sf

## HIGHLIGHTS

- Professionally managed retail/ medical location
- Bus stop right in front of the building, providing easy access for customers
- Elevator service
- Located steps from Beaubien Metro Station



For leasing inquiries please contact  
**Skyline at 1-800-451-5229**  
<https://www.skylineretailreit.ca/>