

# 1220, 1300-1400 Saint-Jean-Baptiste Blvd Montreal, QC



**DOLLARAMA**

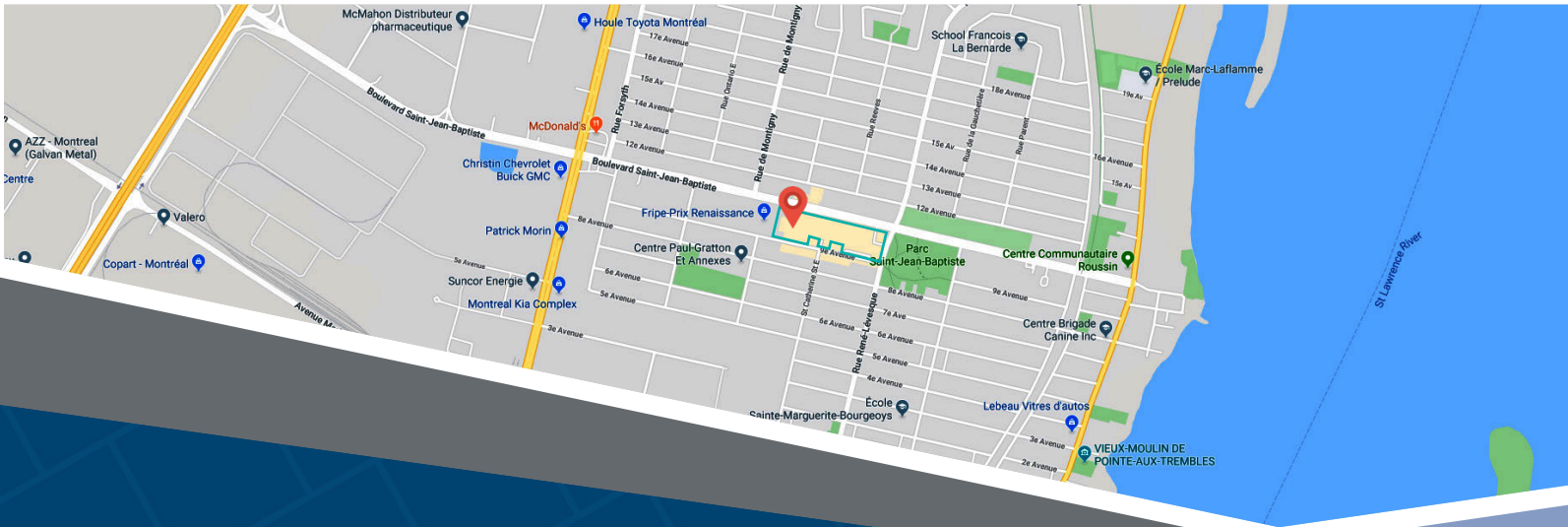
**SUBWAY**

**metro**

**Jean Coutu**

**ROSSY**

*Tim Hortons*



For leasing inquiries please contact  
**Skyline at 1-800-451-5229**  
<https://www.skylineretailreit.ca/>

# 1220, 1300-1400 Saint-Jean-Baptiste Blvd Montreal, QC

**Legend**

Available

Occupied

SAINT-JEAN-BAPTISTE BOULEVARD



For leasing inquiries please contact  
**Skyline at 1-800-451-5229**  
<https://www.skylineretailreit.ca/>

# 1220, 1300-1400 Saint-Jean-Baptiste Blvd Montreal, QC

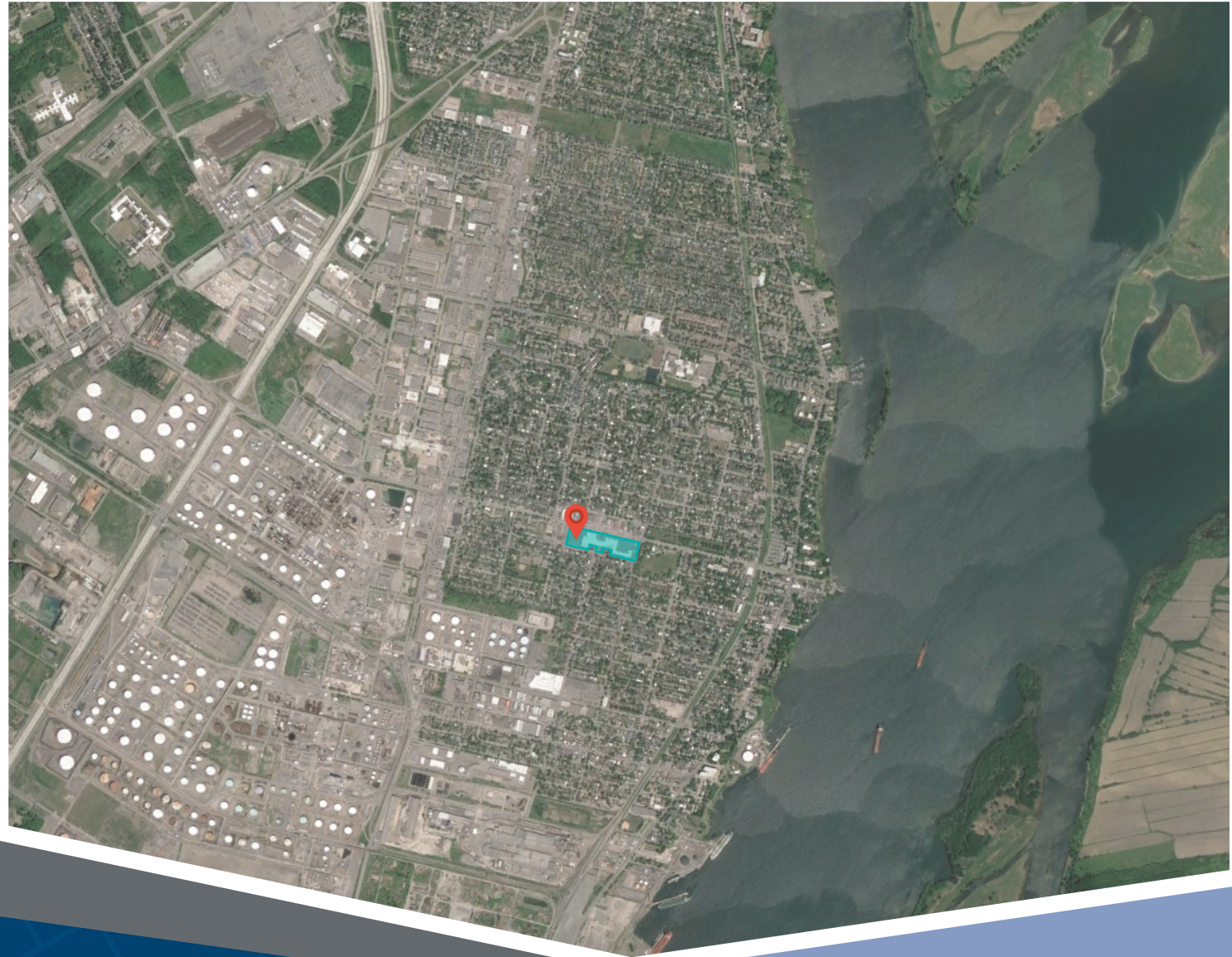
1220, 1300-1400 Saint-Jean-Baptiste is located in a retail node with convenient access to Autoroute 40 and local transit. Anchored by Metro, Jean Coutu Pharmacy, Rossy and Tim Hortons, this centre is highly visible and is easily accessible to provide residents in this established neighbourhood with their everyday essential needs.

**Closest Major Intersection:**  
Saint-Jean-Baptiste Boulevard &  
René-Lévesque Road

**GLA:** 115,810 sf

## HIGHLIGHTS

- Professionally managed property
- Ample surface parking for staff and customers
- Good flow of customer traffic
- High visibility from Saint-Jean-Baptiste Boulevard
- Exterior and pylon signage opportunities



For leasing inquiries please contact  
**Skyline at 1-800-451-5229**  
<https://www.skylineretailreit.ca/>