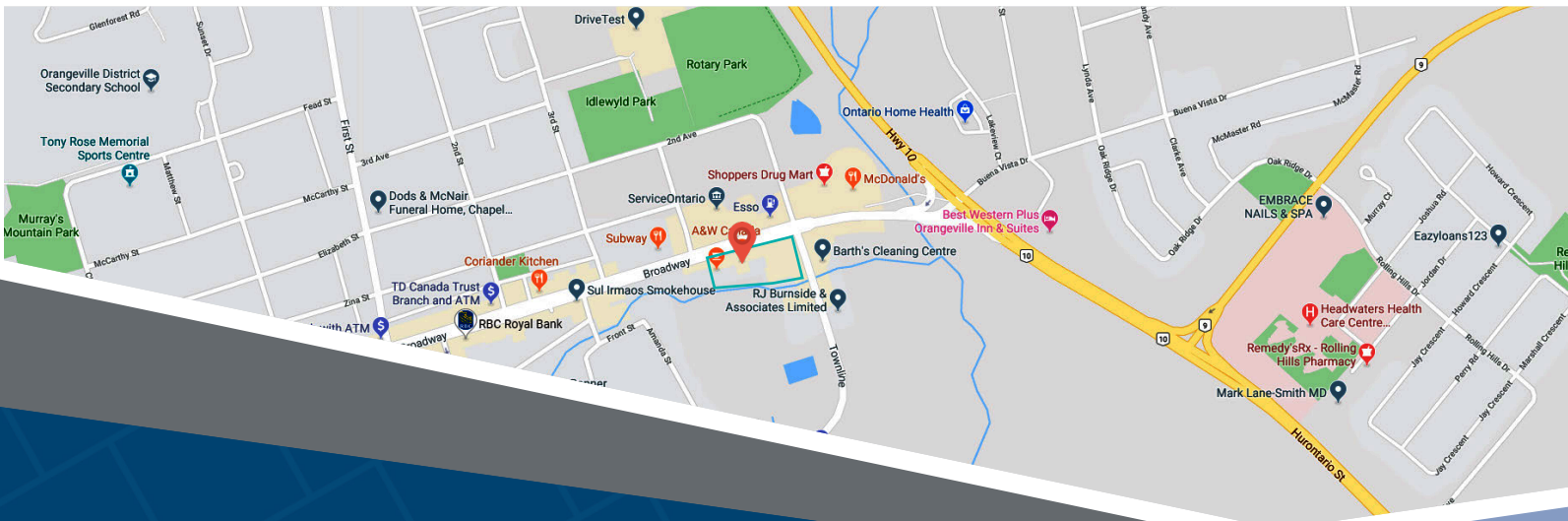




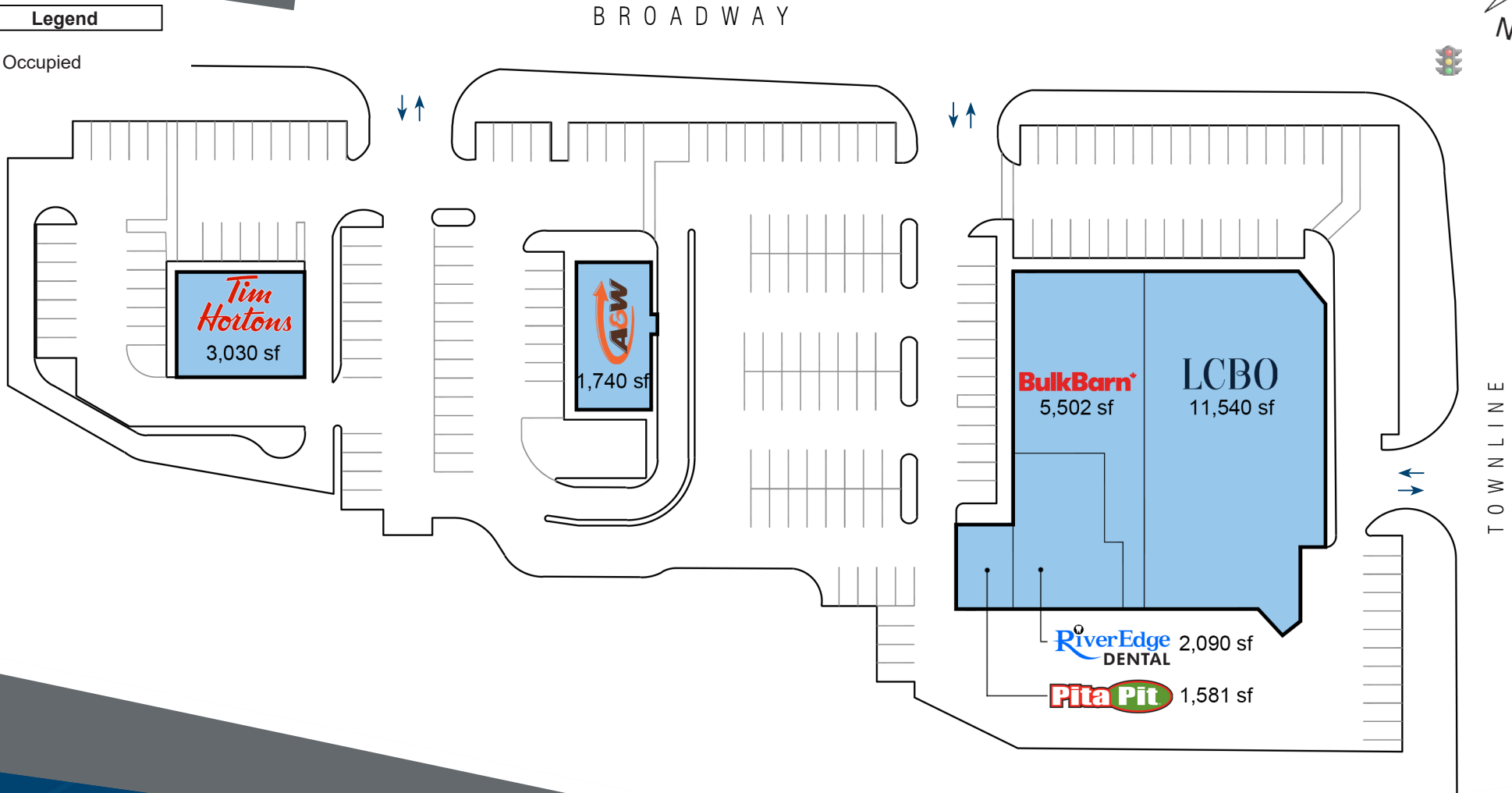
**BulkBarn\***  
**LCBO**  
*Tim Hortons.*  
**Pita Pit**



For leasing inquiries please contact  
**Skyline at 1-800-451-5229**  
<https://www.skylineretailreit.ca/>

Legend

Occupied





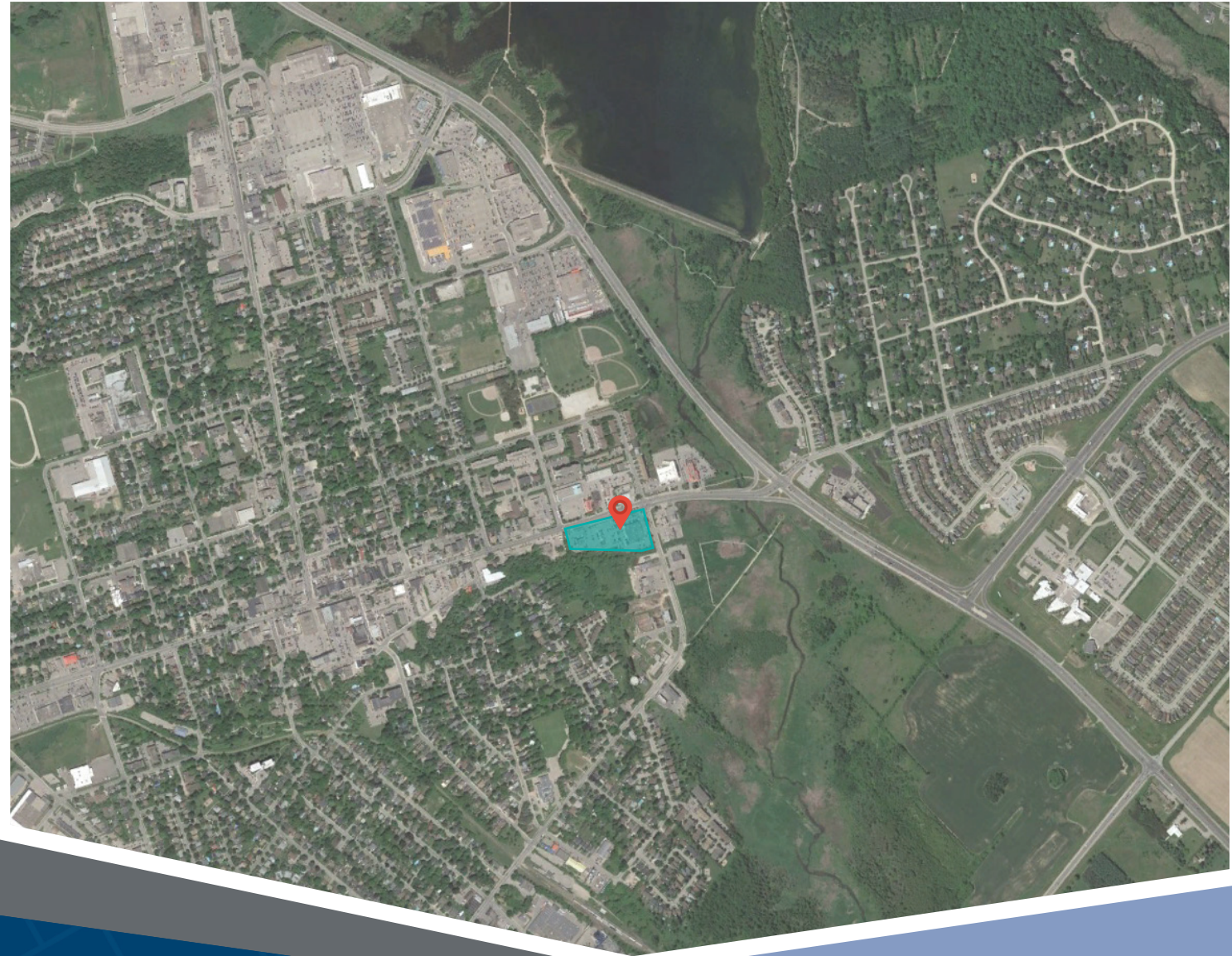
40 Broadway is a multi-tenant retail plaza comprised of six tenants, anchored by LCBO and Bulk Barn. This property is located in central Orangeville, near the northeast corner of Townline & Broadway. 40 Broadway was redeveloped circa 2011, and is comprised of 25,483 square feet of GLA.

**Closest Major Intersection:**  
Broadway & Townline

**GLA:** 25,483 sf

## HIGHLIGHTS

- Professional, well-managed business
- Ample free customer and employee parking
- Large pylon signage opportunity at the corner of Townline & Broadway
- High-visibility front signage facing a major thoroughfare



For leasing inquiries please contact  
**Skyline at 1-800-451-5229**  
<https://www.skylineretailreit.ca/>