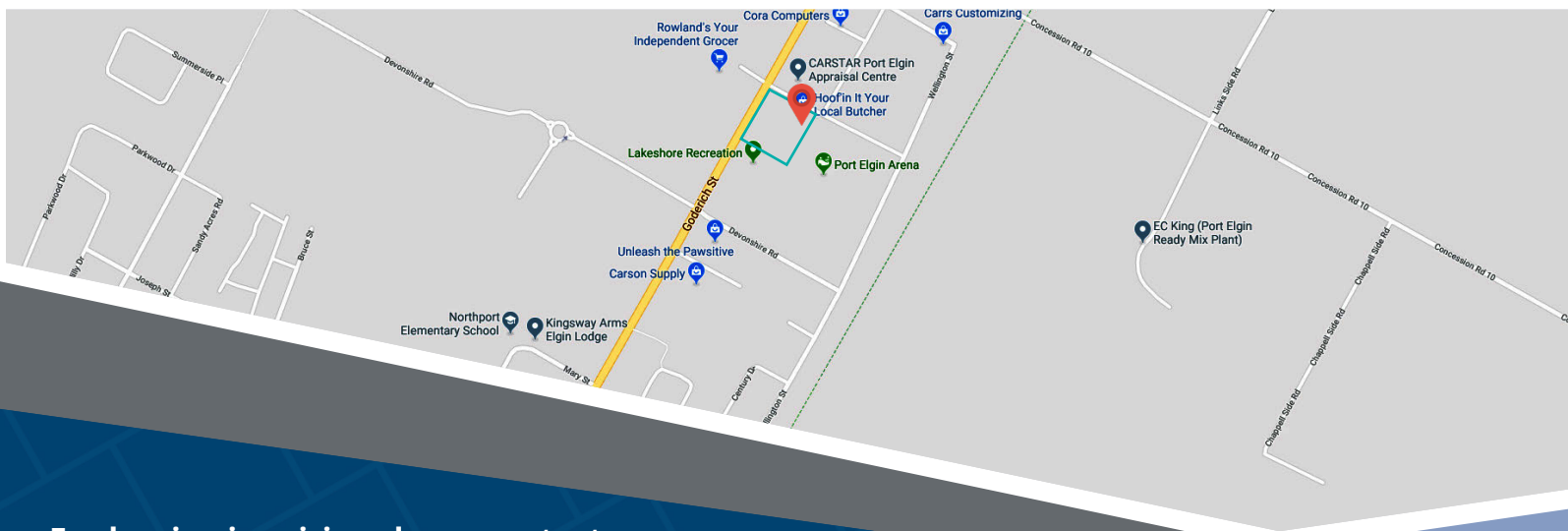
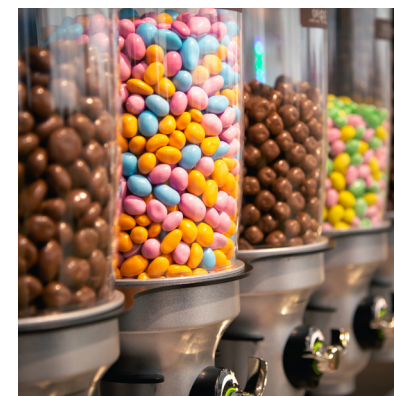




**SHOPPERS**  
DRUG MART

**BulkBarn**

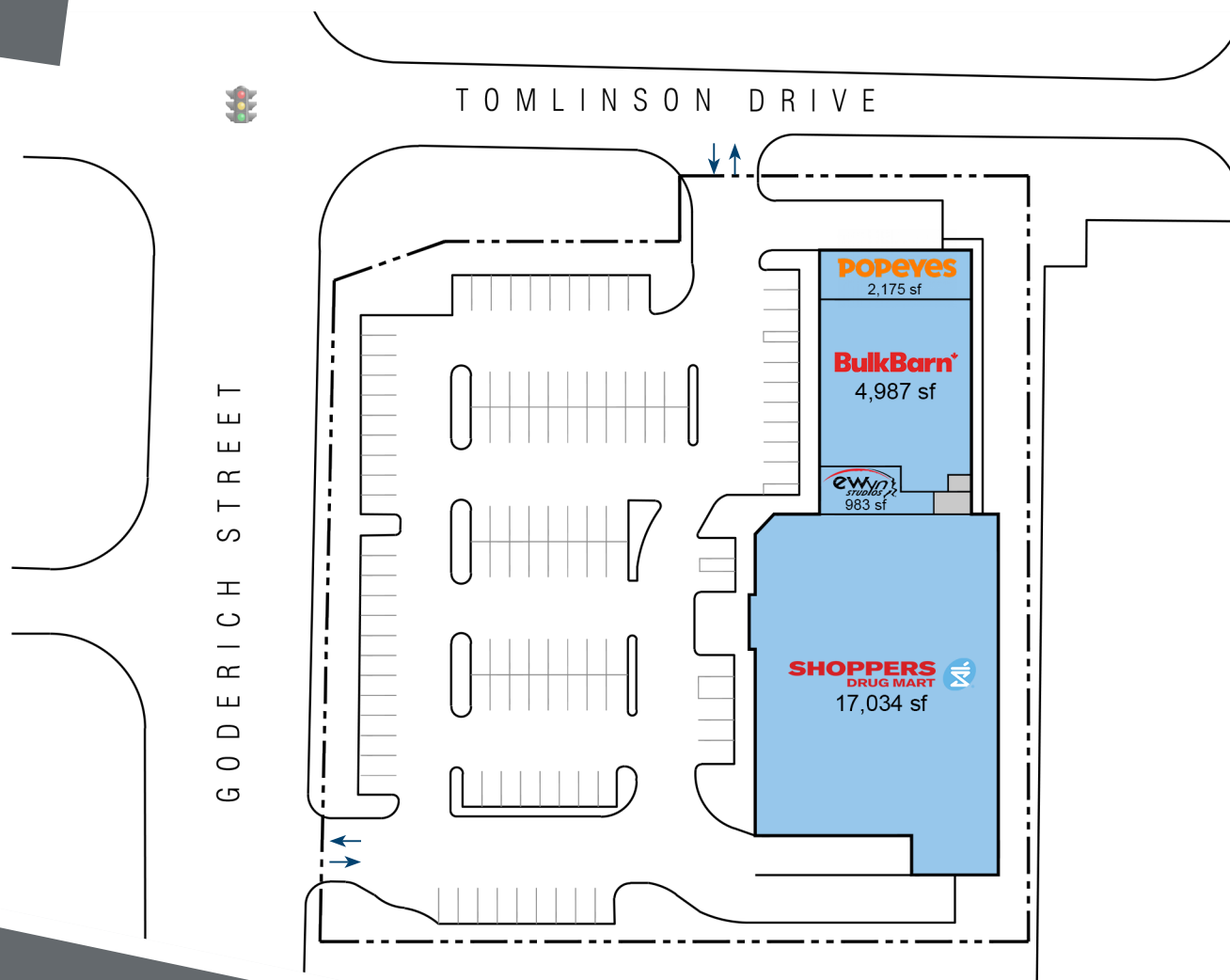
**ewyn**  
STUDIOS



For leasing inquiries please contact  
**Skyline at 1-800-451-5229**  
<https://www.skylineretailreit.ca/>

**Legend**

Occupied





Port Elgin Mews is a retail complex located on Goderich Street at Tomlinson Drive. This single-story building was built circa 2007 with a brick veneer exterior. It is situated on approximately 2.4 acres of land, and is comprised of 25,179 square feet of GLA. Anchor tenants include Shoppers Drug Mart and Bulk Barn. Shared surface parking for 124 vehicles is available.

**Closest Major Intersection:**  
Goderich St & Tomlinson Dr

**GLA:** 25,179 sf

## HIGHLIGHTS

- Excellent retail location facing Goderich St (Hwy 21)
- Pylon and front signage opportunities
- Ample free customer parking
- Very busy plaza with Shoppers Drug Mart and Bulk Barn as co-tenants



For leasing inquiries please contact  
**Skyline at 1-800-451-5229**  
<https://www.skylineretailreit.ca/>