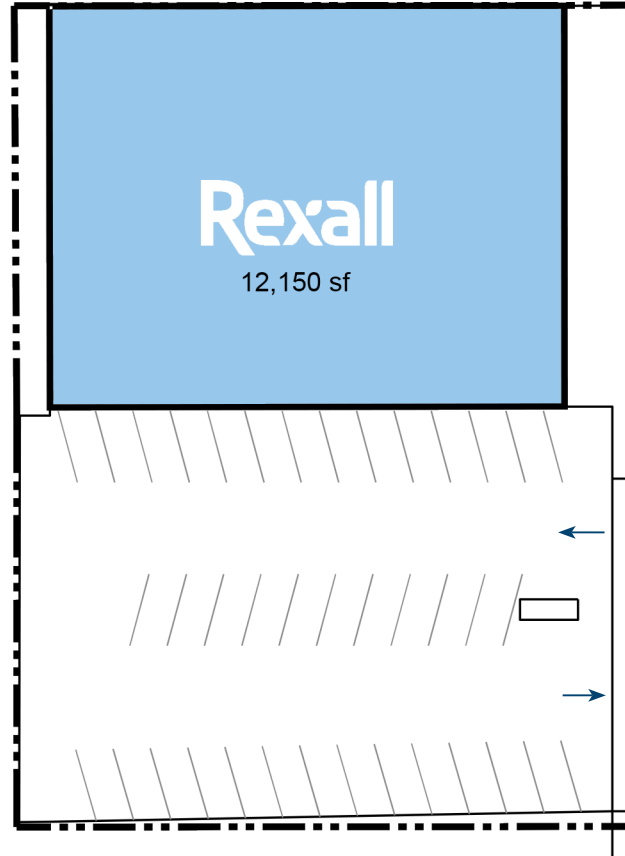


For leasing inquiries please contact  
**Skyline at 416-444-5229**

Legend

Occupied



For leasing inquiries please contact  
Skyline at 416-444-5229

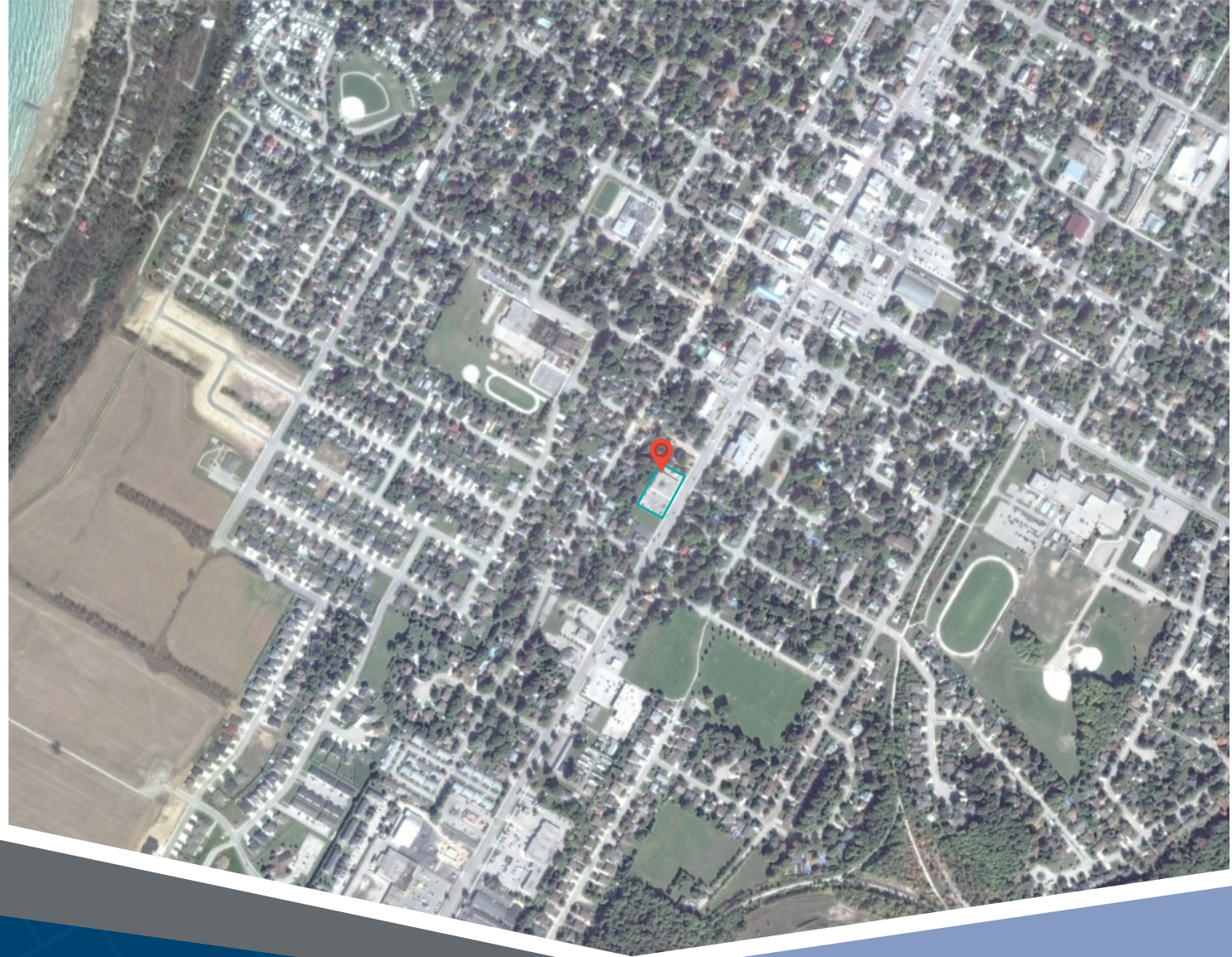
466 Goderich Street is a stand-alone, single-tenant retail location on Goderich Street (Hwy 21) in Port Elgin. This property is close to several medium-density residential areas, and is easily accessed from Goderich Street, the main thoroughfare in Port Elgin. This space is comprised of 12,150 square feet of gross leasing area. The parking lot supports 30 dedicated spaces for the building. This location is currently occupied by Rexall.

**Closest Major Intersection:**  
Goderich St (Hwy 21) & Gustavus St (Hwy 17)

**GLA:** 12,150 sf

## HIGHLIGHTS

- Professionally managed location
- Pylon and front signage opportunities facing busy Goderich St (Hwy 21)
- Ample surface parking for customers and staff
- Close to residential neighbourhoods



For leasing inquiries please contact  
**Skyline at 416-444-5229**