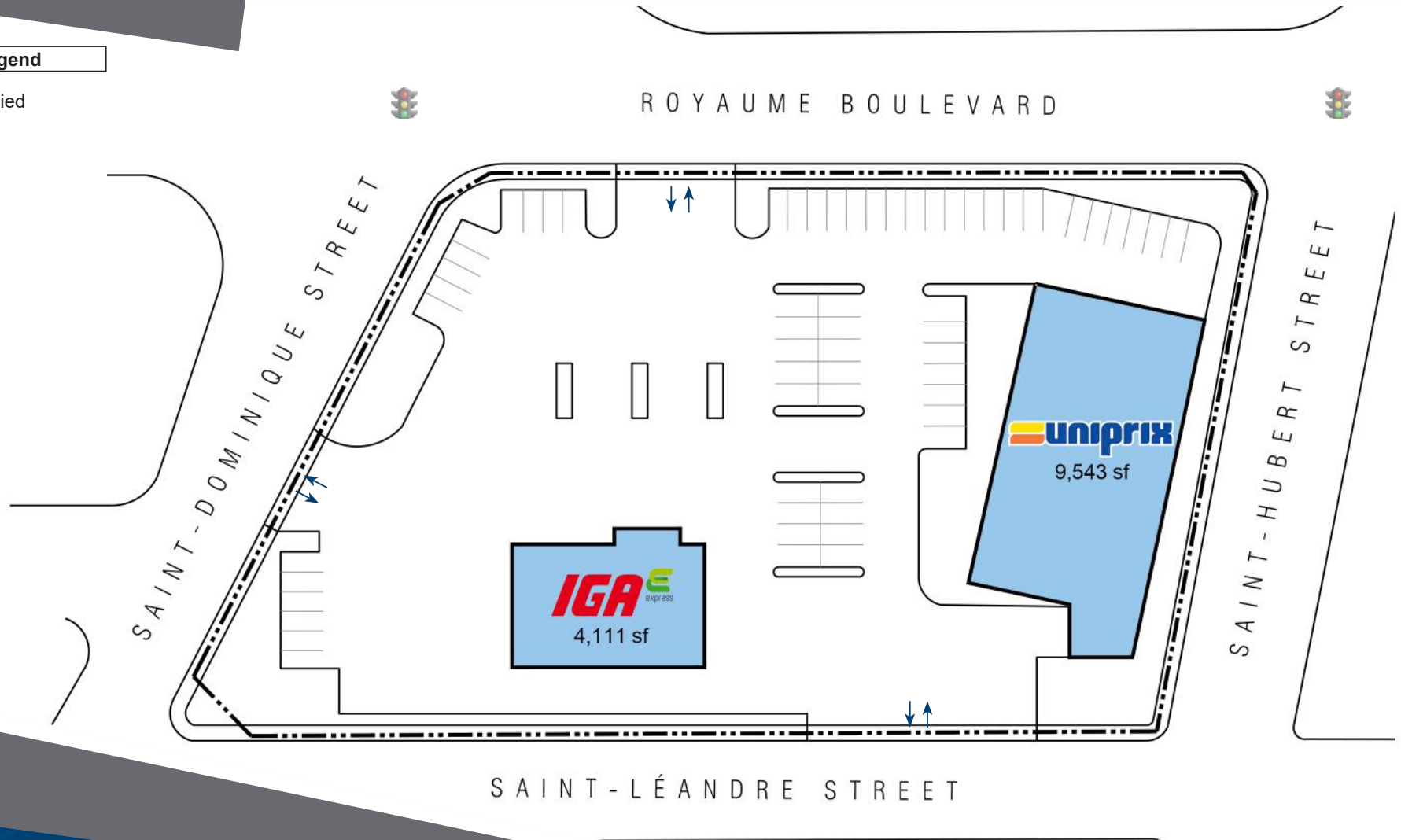


For leasing inquiries please contact  
**Skyline at 1-800-451-5229**  
<https://www.skylineretailreit.ca/>

Legend

Occupied



For leasing inquiries please contact  
**Skyline at 1-800-451-5229**  
<https://www.skylineretailreit.ca/>

# 3751-3761 Royaume Boulevard Saguenay, QC

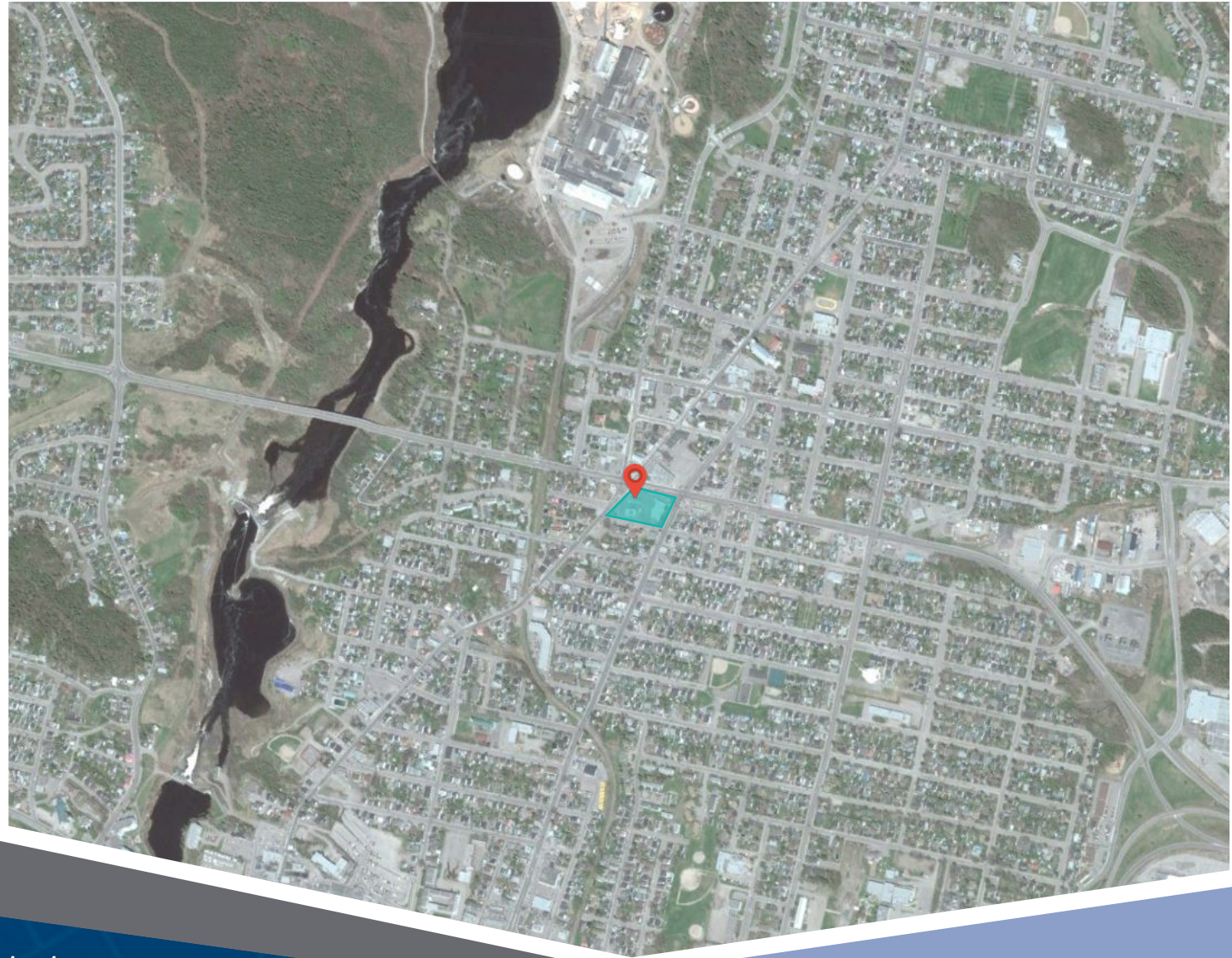
3751-3761 Royaume boulevard has a total leasable area of 13,654 square feet on a 1.95 acre site. A total of 79 parking spaces are available on the site.

**Closest Major Intersection:**  
Royaume Blvd & Saint-Dominique Street

**GLA:** 13,654 sf

## HIGHLIGHTS

- Professionally managed commercial building
- Commercial signs on the front of the building offering great visibility for traffic passing on Royaume Boulevard
- Strategic location at the intersection of the two main commercial arteries in the Jonquière borough
- Offering a large parking lot with 79 spaces in total



For leasing inquiries please contact  
**Skyline at 1-800-451-5229**  
<https://www.skylineretailreit.ca/>