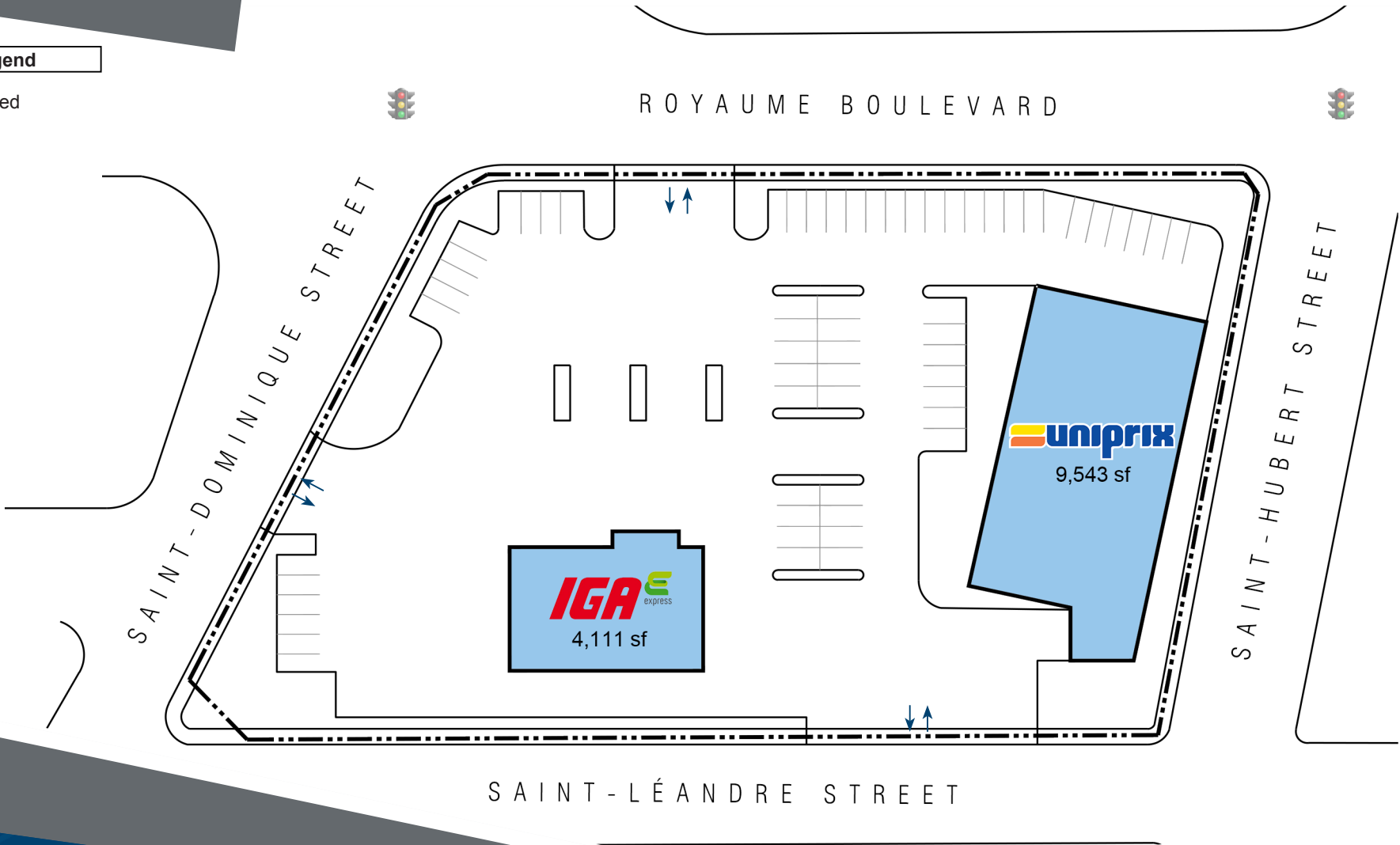




For leasing inquiries please contact
Skyline at 416-444-5229

Legend

Occupied



For leasing inquiries please contact
Skyline at 416-444-5229

3751-3761 Royaume Boulevard Saguenay, QC

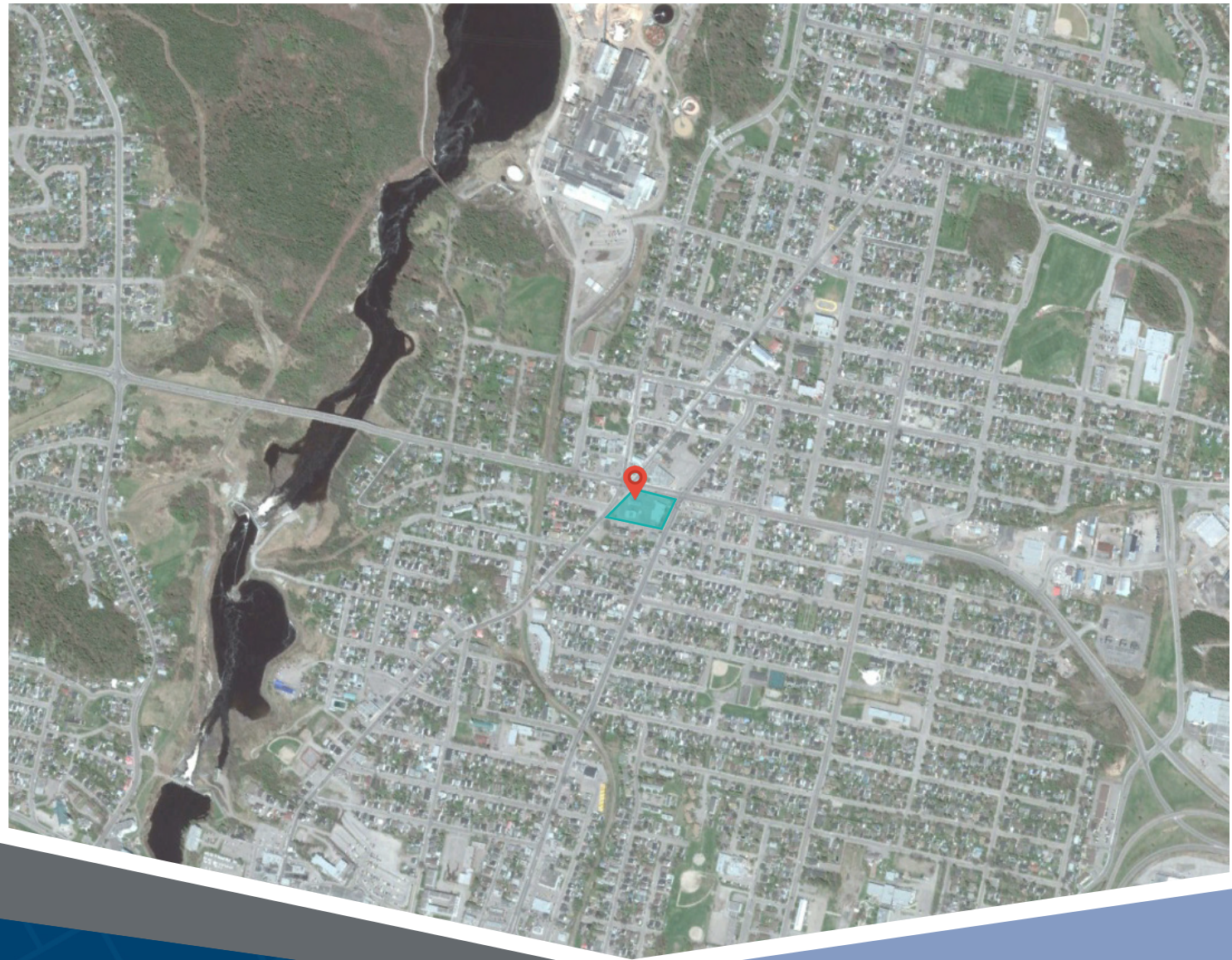
3751-3761 Royaume boulevard has a total leasable area of 13,654 square feet on a 1.95 acre site. A total of 79 parking spaces are available on the site.

Closest Major Intersection:
Royaume Blvd & Saint-Dominique Street

GLA: 13,654 sf

HIGHLIGHTS

- Professionally managed commercial building
- Commercial signs on the front of the building offering great visibility for traffic passing on Royaume Boulevard
- Strategic location at the intersection of the two main commercial arteries in the Jonquière borough
- Offering a large parking lot with 79 spaces in total



For leasing inquiries please contact
Skyline at 416-444-5229