

For leasing inquiries please contact  
**Skyline at 1-800-451-5229**  
<https://www.skylineretailreit.ca/>



UNIT	TENANT	AREA
X-C1	Tahini's	850.5
X-C2	Cobs Bread	1,351
X-C3	AVAILABLE	2,087
A2	PartSource	7,300
A3	The Beer Store	6,988
B1	Fat Bastard Burrito	1,388
B3	Dollarama	14,653
B5	LCBO	6,701
C1	Due North Cannabis	5,954
C2	Little Caesar's	1,532
C3	FYi Doctors	6,206
C4	AVAILABLE	3,004
C5	Subway	1,200
C6	Storage	969
C7	Hess Jewellers	1,520
C8	Money Mart	1,959
C9	Pet Food Warehouse	3,097
C10	CosmoProf	2,321
C11	CIBC	4,284
C11-B	Sushi & Bubble	696
C12	Hearing First Solutions	896
C13	All Star Trophies	421
C15	Pharmasave	3,975
C16	Serco Drivers Training	2,832
C17	Maritime Travel	728
C18	AVAILABLE	662
C19/C20	Aaron's	7,059
C21	Diana K. Stoker Professional Corporation and Kevin Thibeault Professional Corporation	858
D	Metro	47,623
E	Churchill Dental	1,471

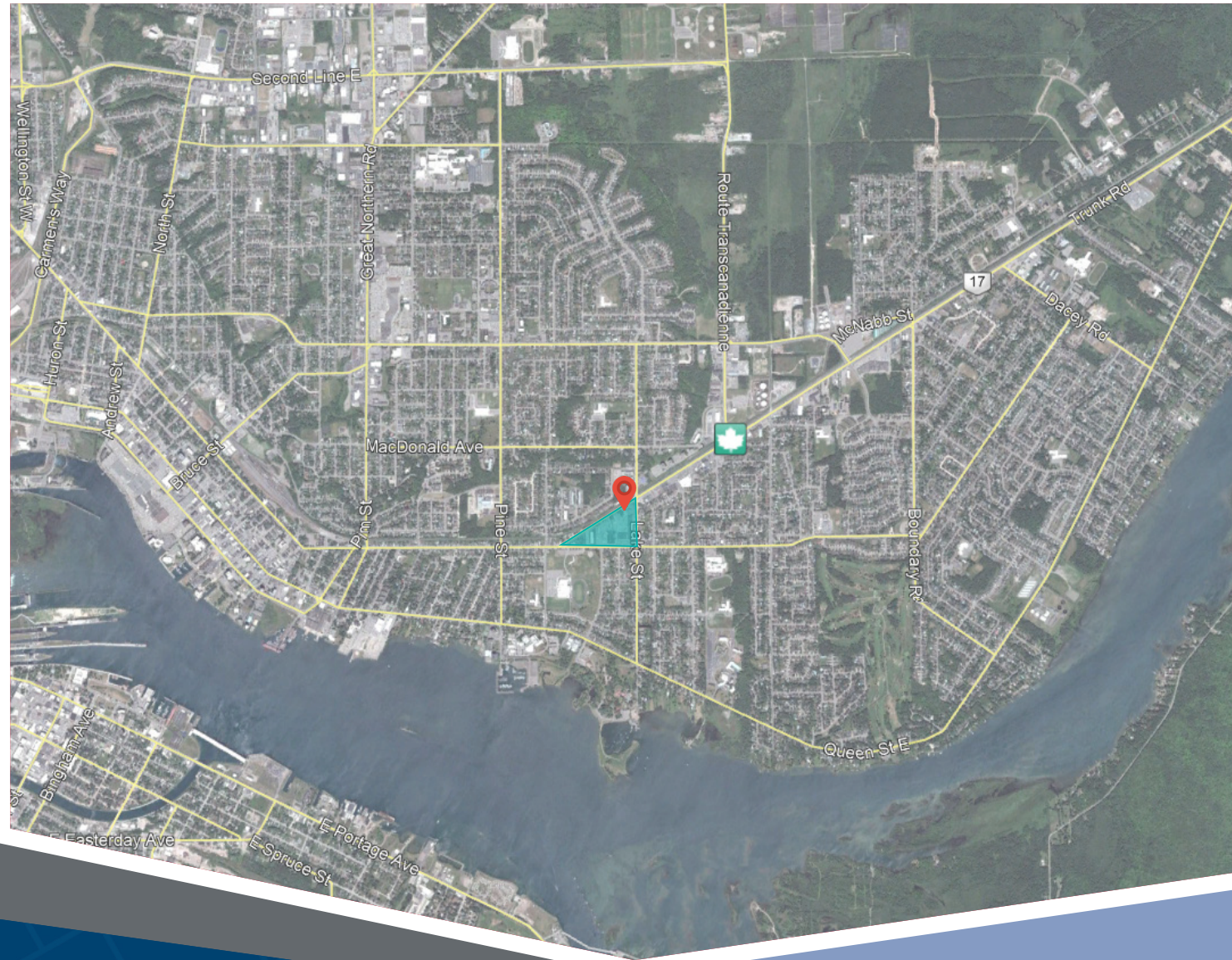
Located at the intersection of Highway 17B & Churchill Boulevard in Sault Ste. Marie, this grocery anchored centre offers 31 units totaling 145,422 sf featuring retailers such as Metro, Dollarama, PartSource, and The Beer Store.

**Closest Major Intersection:**  
Churchill Blvd & Wellington St E

**GLA:** 145,422 sf

## HIGHLIGHTS

- Located in the fastest growing quadrant of Sault Ste. Marie.
- Excellent access and exposure in strong retail community with high volumes of traffic.
- Excellent flow of customer traffic entering the centre, drawn in by strong anchor tenants.



For leasing inquiries please contact  
**Skyline at 1-800-451-5229**  
<https://www.skylineretailreit.ca/>